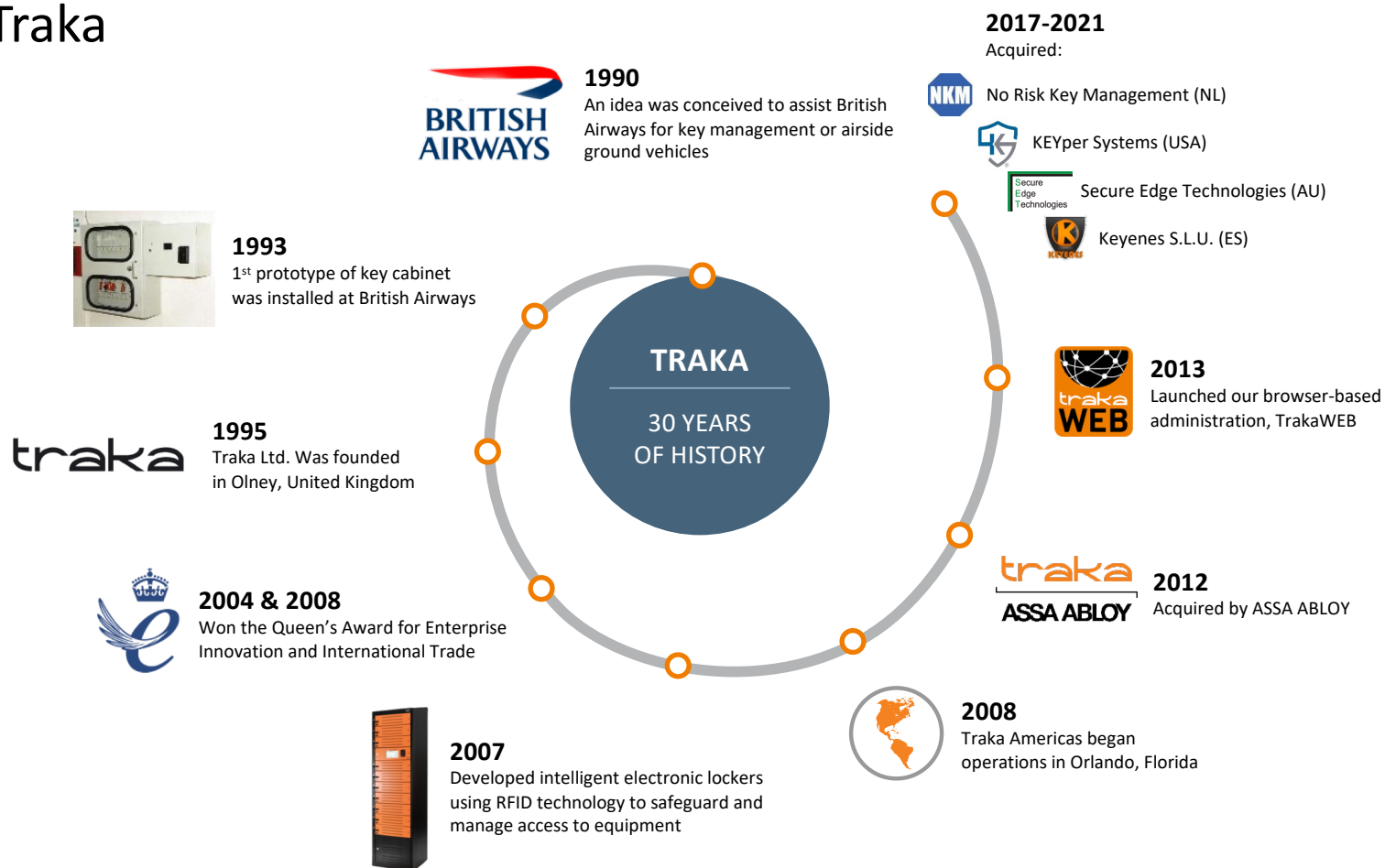


Campus Key Management, Security, and Operational Efficiency

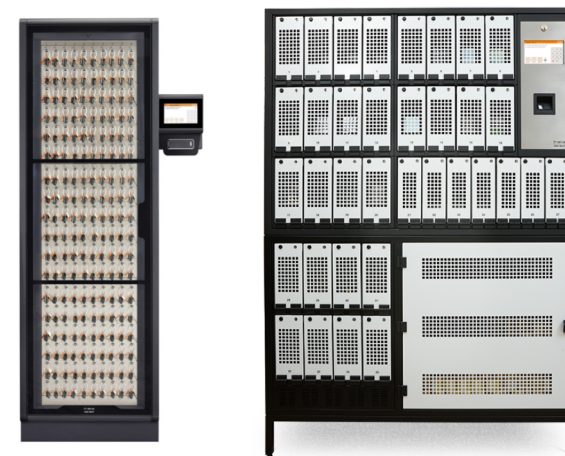
Dirk Welch
Regional Sales Manager (Midwest)

The ASSA ABLOY Group is the global leader in access solutions. Every day we help people feel safe, secure and experience a more open world.

About Traka



Extend the reach of your existing platform



- Facility key control
- Fleet control
- Equipment management
- Maintenance lockout and more!

What is the true risk/cost of not properly managing campus keys, vehicles & equipment?



Increased administration



Lost time locating missing items



Rekey & equipment replacement costs



Liability
(theft or misuse)



Prone to human error



Reduced ability to enforce protocol

The added value of better management

In addition to reducing costs, proper management of keys and equipment improves operational processes.

- Time savings & efficiency
- Enforcing & enhancing protocol
- Better utilization & improved processes around equipment use
- The value of the audit trail, tracking, and data



Time savings & efficiency

Think about the **time loss** inefficient key and device access management creates in just **one day**.

Time savings & efficiency

Think about the **time loss** inefficient key and device access management creates in just **one day**.



Employee must travel to a central office to check out the item

Time savings & efficiency

Think about the **time loss** inefficient key and device access management creates in just **one day**.



Employee must travel to a central office to check out the item



Employee must wait for manager to issue item, and for other employees to be issued their items

Time savings & efficiency

Think about the **time loss** inefficient key and device access management creates in just **one day**.



Employee must travel to a central office to check out the item



Employee must wait for manager to issue item, and for other employees to be issued their items



Manager is pulled from other activities to issue item and document usage

Time savings & efficiency

Think about the **time loss** inefficient key and device access management creates in just **one day**.



Employee must travel to a central office to check out the item



Employee must wait for manager to issue item, and for other employees to be issued their items



Manager is pulled from other activities to issue item and document usage



Employee must travel from central office to work area

10-20 min.

Employee must return item at end of shift



10-20

Time savings & efficiency

Think about the **time loss** inefficient key and device access management creates in just **one day**.



Employee must travel to a central office to check out the item



Employee must wait for manager to issue item, and for other employees to be issued their items



Manager is pulled from other activities to issue item and document usage



Employee must travel from central office to work area

10-20 min.

Employee must return item at end of shift

2nd Shift



10-20



10-20



10-20

Time savings & efficiency

Think about the **time loss** inefficient key and device access management creates in just **one day**.



Employee must travel to a central office to check out the item



Employee must wait for manager to issue item, and for other employees to be issued their items



Manager is pulled from other activities to issue item and document usage



Employee must travel from central office to work area

10-20 min.

Employee must return item at end of shift

2nd Shift

3rd Shift



10-20

10-20

10-20

10-20

10-20

Time savings & efficiency

Think about the **time loss** inefficient key and device access management creates in just **one day**.



Employee must travel to a central office to check out the item



Employee must wait for item, and for other employees issued their items



Manager is pulled from other activities to issue item and document usage



Employee must travel from central office to work area

Employee/University loses 20-120 minutes of productivity each day when employees rely on a single key or device

Item is returned at end of shift

2nd Shift

3rd Shift

10-20 min.

10-20

10-20

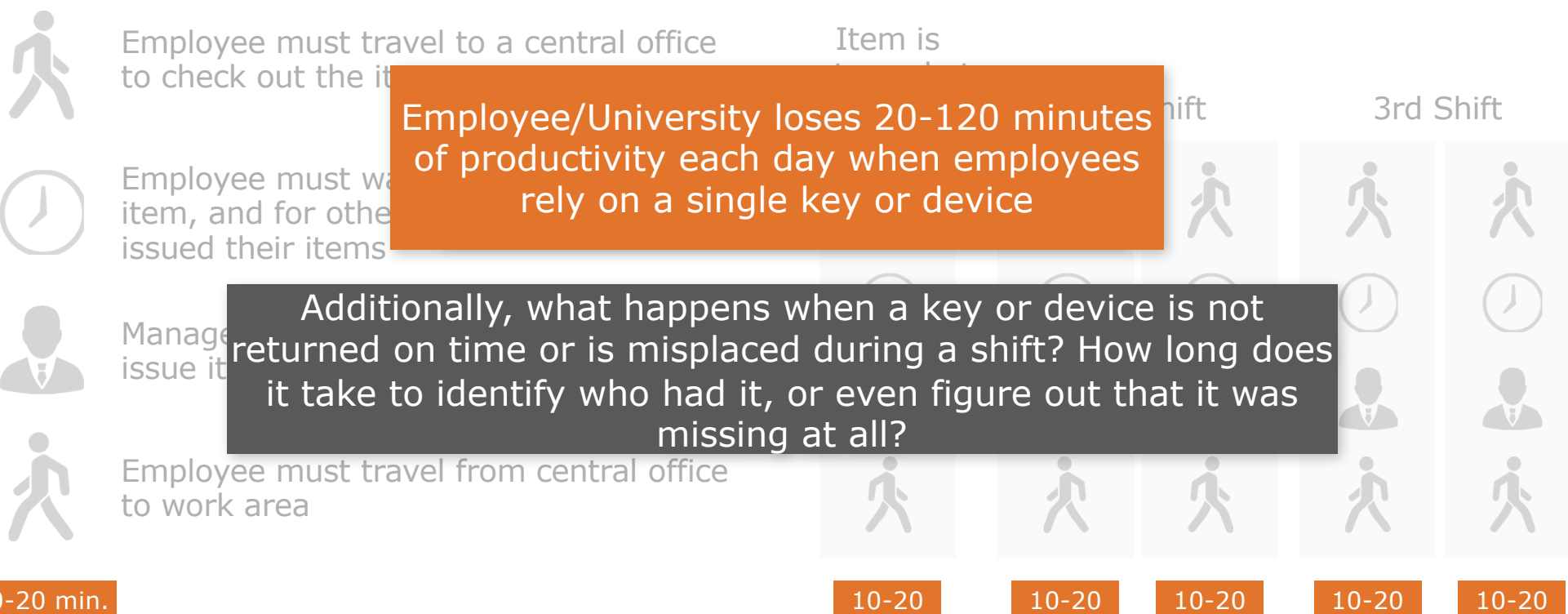
10-20

10-20

10-20

Time savings & efficiency

Think about the **time loss** inefficient key and device access management creates in just **one day**.



Decentralization increases efficiency

- Employee productive work time increases
- Manager productive work time increases (and you may no longer need a dedicated position to manage keys/equipment)
- Chance for delay of shift startup due to missing keys/equipment decreases



Increase security and operational efficiency

traka
ASSA ABLOY

- **Decentralization** - Safely store keys and equipment where you need them most.
- **Automation** - Allow authorized staff to access the items they need in seconds, without the need for management oversight.
- **Monitoring** - Retain an audit trail for all transactions. Alert managers of overdue items or unauthorized access attempts.
- **Integration** - Integrate key management system with EAC.



Enforce and enhance protocol

Hold staff accountable for acquiring keys/equipment and starting work on time

- Employees can no longer say that they spent 30 minutes trying to find a key, or that a manager was not available to sign out a device
- Items that are overdue (i.e. Curfews), eliminates the chances of keys/assets remaining with staff/contractors



Enforce and enhance protocol

Access Schedules

- Restrict and allow key access based on time of day and day of week

Item Booking

- Allow users or administrators to reserve items for a specific time and prevent others from accessing the items at that time

Item Allowance

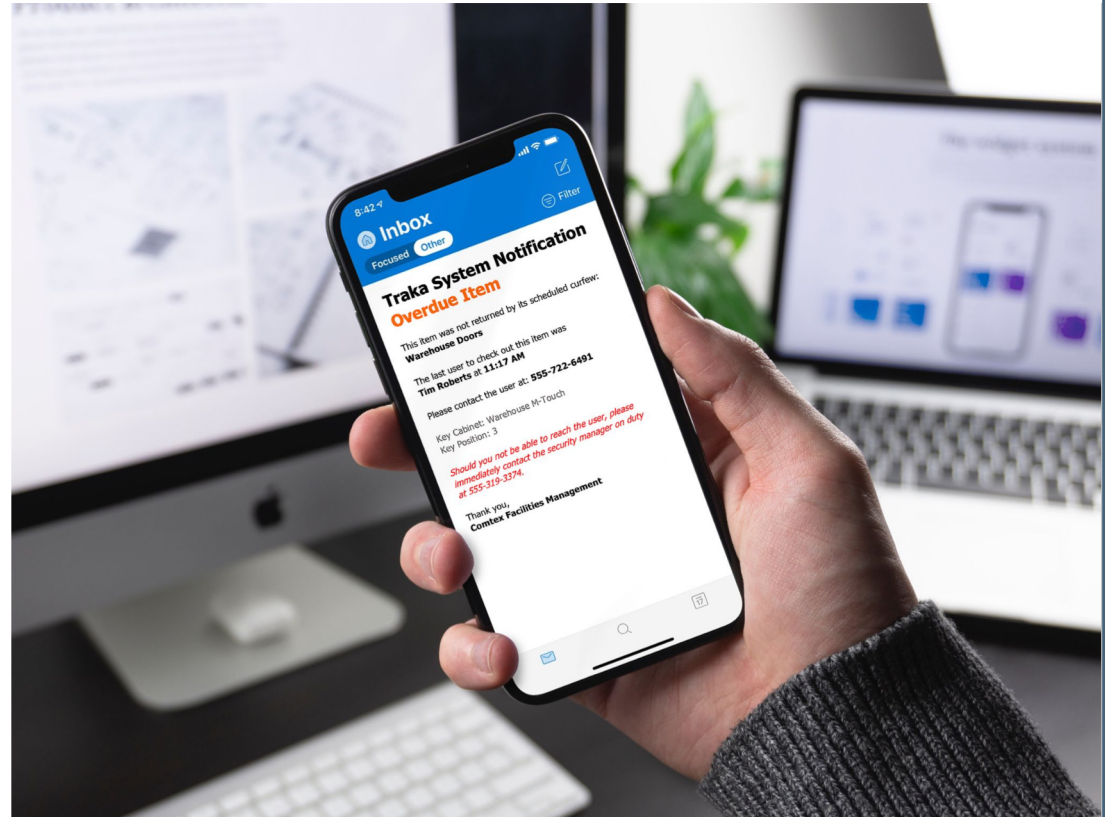
- Allow access with limits



Enforce and enhance protocols

Notifications

- Alert administrators to important system activity and free them from the daily task of issuing keys & equipment
- Manage by exception – Receive notifications when an employee does not follow a process properly



The value of better equipment management



100% Accountability

- Users act more responsibly knowing that they are held accountable for returning assets on time
- Employees treat campus assets more carefully



The value of better equipment management

traka
ASSA ABLOY

Ensure that devices are charged and ready for use

- Integrated charging
- Charge detection alerts users or administrators that a device has been returned, but is not charging
- First In, First Out feature
- Maximize utilization
- Prevent device favoritism and ensure even and consistent device usage



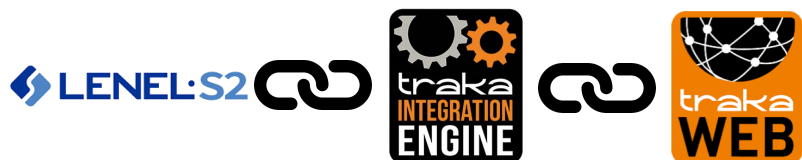
The value of better equipment management

Fault Logging

- Users can report equipment issues upon item return
- Administrators can receive notifications to generate a work order or repair an item
- Automatically prevent future users from accessing any items recorded with a critical fault



Integration features & benefits



- Users generated from cardholders
- Badge synchronization (ID, active/expired, status)
- Access levels linked to Item Access Groups
- Traka Events exposed to Alarm Monitoring
- Asset return/provision assurance

- **Extend the reach** of the physical access control system to manage any offline opening, asset or vehicle
- **Provide accountability** for physical assets otherwise not managed by the access control system
- **Reduce administration overhead** of maintaining multiple sets of identities & clearances
- **Drive process** through the integration of event and alarm information

Case Study: Western Connecticut State

traka
ASSA ABLOY



traka
ASSA ABLOY

SOLUTIONS
IN EDUCATION

 Keys	 Access Badges
 Vehicles	 Laptops
 Tablets	 Radios
 Equipment	 Weapons

Experience a safer and more open world

traka
ASSA ABLOY

Case Study: Rochester Institute of Technology



**INTEGRATED
SOLUTION**

WEAPONS & KEYS

Custom Locker System
for 20 Rifles

S-Touch Key Cabinet

Centrally Managed
via Traka Web

Reason & Fault Logging

Integrated to Lenel System



Experience a safer and more open world





Thank you

Experience a safer and more open world

traka
ASSA ABLOY