

# Stanford Campus Lockdown



## ***Presenters:***

Jose Rocha

Tracy Neil



# At a Glance



## Student Enrollment

**7,761** undergraduate

[Class of 2026](#) profile

**9,565** graduate

*As of Autumn Quarter, 2022*



**Established 1885**  
**Opened 1891**



## Leadership

President Marc Tessier-Lavigne

Provost Persis Drell



## Faculty

**2,304** faculty members

**21** Nobel laureates are currently members of the Stanford community

**5:1** student to faculty ratio



## Seven Schools

[Business](#)

[Doerr School of Sustainability](#)

[Education](#)

[Engineering](#)

[Humanities and Sciences](#)

[Law](#)

[Medicine](#)



## Campus

**8,180** contiguous acres

Over **600** buildings



## Research

**7,500+** externally sponsored projects

**\$1.82 billion** total budget



## Endowment

**\$36.3 billion** *(as of August 31, 2022)*



## See Also

- [Cardinal Athletics](#)



# Our Deployment

## **OnGuard v7.6.382.518**

1 application server

8 communications servers

2 RDS servers

All VM's - Windows Server 2019

1 database server

Windows 2016, SQL Server 2016 SP2

**342+ buildings**

**737 access panels:**

151 LNL-4420 panels

335 LNL-3300 panels

21 LNL-2220 panels

80 LNL-2210 panel

150 ILS panels

**3902 total locks:**

3319 wired locks

558 wireless locks

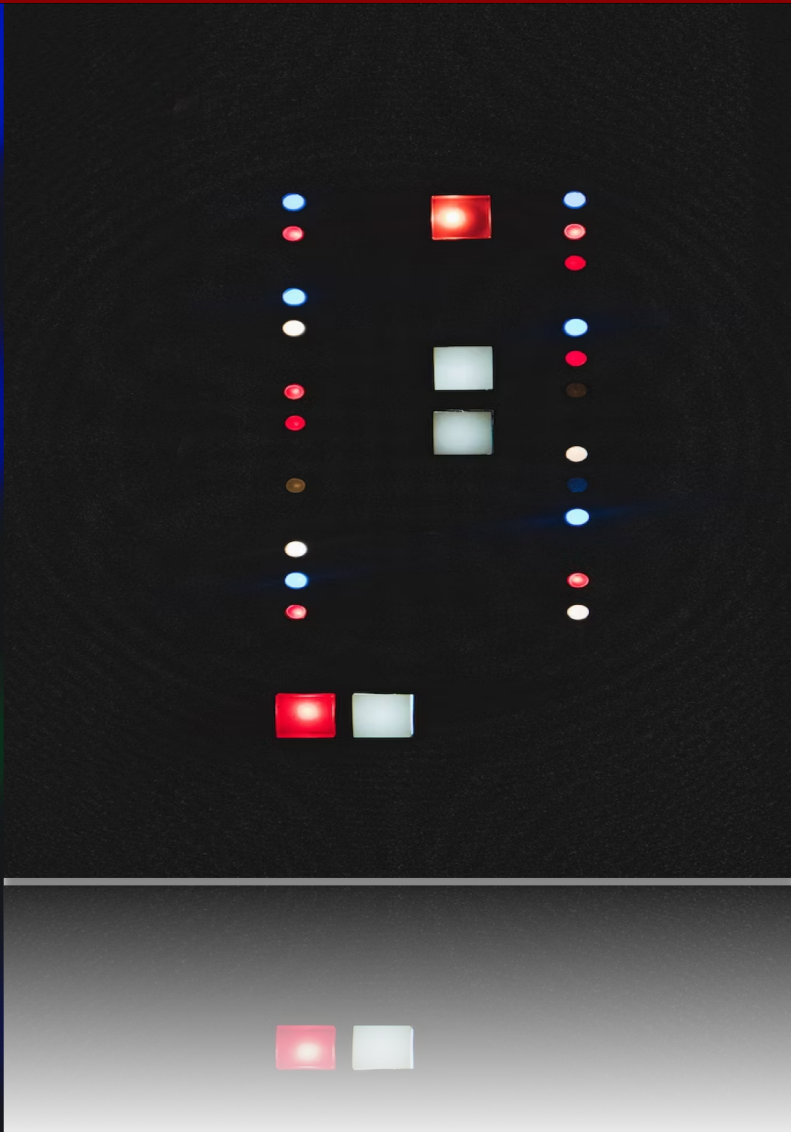
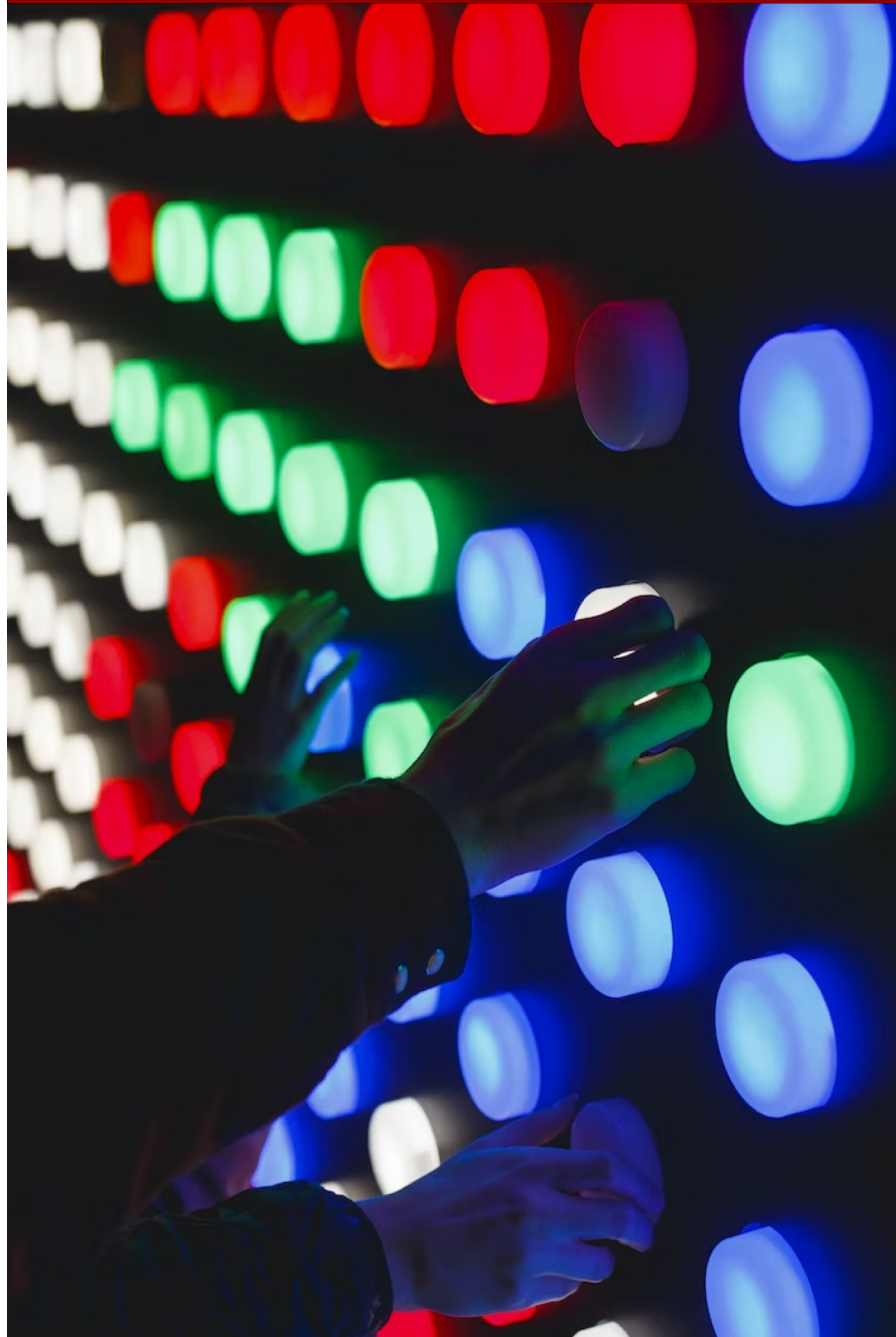
25 electrified locks

**~108,000 cardholder records with active badges**

**93 Segments**



# Buttons





# Lockdown Buttons



There are 3 locations that have lockdown buttons that impact multiple buildings on campus when activated.

2 locations on campus:

- Forsythe Hall (ITOC)\*
- Graduate School of Business (GSB)+

1 location off campus:

- City of Palo Alto Police Dispatch Center (CPA)\*

\*The Forsythe Hall and CPA lockdown buttons impact ALL Lenel readers on campus

+GSB lockdown button impacts ONLY readers at the GSB.



# Lockdown Programming

Local I/O Function Lists    Device-->Function Links

Function List Name	Access Panel
LDB-P-01-001-2.1-2052-ARCADEA ADMIN LOCKDOWN	P-01-001-2.1-2052-BUILDING 1
LDB-P-01-001-2.1-I-XXXX-RECEPTION LOCKDOWN	P-01-001-2.1-2052-BUILDING 1
LDB-P-01-020-2.1-2046X-BLDG20 LOCKDOWN	P-01-020-2.1-2046X-BUILDING 20
LDB-P-01-040-2.1-3003X-BLDG40 LOCKDOWN	P-01-040-2.1-3003X-BUILDING 40
LDB-P-01-050-2.1-2178X-BLDG50 LOCKDOWN	P-01-050-2.1-2178X-BUILDING 50
LDB-P-01-060-2.1-2088X-BLDG60 LOCKDOWN	P-01-060-2.1-2088X-BUILDING 60
LDB-P-01-070-2.1-2016-ARCADEA HUMANI LOCKDOWN	P-01-070-2.1-2016-HUMAN REL STU
LDB-P-01-080-2.1-2028X-BLDG 80 LOCKDOWN	P-01-080-2.1-2028X-BUILDING 80

Assigned Functions

Order	Function	Argument 1	Argument 2
1	All Reader Lock/Set Mode	Card Only	48 hours

Local I/O Function Lists    Device-->Function Links

Name: LDB-P-01-001-2.1-2052-ARCADEA ADMIN LOCK

Access Panel: P-01-001-2.1-2052-BUILDING 1

Function	Argument 1	Argument 2
1. All Reader Lock/Set Mode	Card Only	48 hours
2.		
3.		
4.		
5.		
6.		

Function Behavior: All Reader Lock/Set Mode

TRUE: All readers on the controller are set to LOCKED for the amount of time in Argument 2.  
FALSE: All readers on the controller are set to the mode in Argument 1 for the amount of time in Argument 2.  
PULSE: Aborts the override mode if currently active.

Action Group Library

Description:

Contents:

Action Group Description	Action Type	Description
LDB-CAMPUS CANCEL LOCKDOWN - WIRED READER	Reader Mode...	0-0 CAMPUS WIRELESS READER Lockdown : Set Mode...
LDB-CAMPUS LOCKDOWN - CARD ONLY	Execute Func...	Execute (PULSE): LDB-P-01-001-2.1-2052-ARCADEA AD...
LDB-CAMPUS LOCKDOWN - LOCKED/BLOCKED	Execute Func...	Execute (PULSE): LDB-P-01-020-2.1-2046X-BLDG20 LO...
LDB-GSB CANCEL LOCKDOWN - WIRED READER	Execute Func...	Execute (PULSE): LDB-P-01-040-2.1-3003X-BLDG40 LO...
LDB-GSB LOCKDOWN - CARD ONLY	Execute Func...	Execute (PULSE): LDB-P-01-050-2.1-2178X-BLDG50 LO...
LDB-GSB LOCKDOWN - LOCKED/BLOCKED	Execute Func...	Execute (PULSE): LDB-P-01-060-2.1-2088X-BLDG60 LO...
LDB-SRWC CANCEL LOCKDOWN - WIRED READER	Execute Func...	Execute (PULSE): LDB-P-01-070-2.1-2016-ARCADEA HU...
LDB-SRWC LOCKDOWN - CARD ONLY	Execute Func...	Execute (PULSE): LDB-P-01-080-2.1-2028X-BLDG 80 LO...
LDB-SRWC LOCKDOWN - LOCKED/BLOCKED	Execute Func...	Execute (PULSE): LDB-P-01-090-2.1-2020-ARCADEA PH...
Leda WinterBreak Test Activate	Execute Func...	Execute (PULSE): LDB-P-01-100-2.1-2019-ARCADEA AN...
Leda WinterBreak Test Deactivate	Execute Func...	Execute (PULSE): LDB-P-01-110-2.1-2028X-BLDG110 LO...
Lock Braun 206	Execute Func...	Execute (PULSE): LDB-P-01-120-1.1-XXXX-MCCLATCHY...
Lock Dink PR No B G I	Execute Func...	Execute (PULSE): LDB-P-01-120-4.1-4091X-MCCLATCHY...
LockDinkG	Execute Func...	Execute (PULSE): LDB-P-01-160-1.1-1118X-WALLENB...
Mikael meeting	Execute Func...	Execute (PULSE): LDB-P-01-160-3.1-3111-GOV COMM R...
Munger 1 Exterior Doors Mask	Execute Func...	Execute (PULSE): LDB-P-01-160-3.1-3111-OPA LOCKDO...
	Execute Func...	Execute (PULSE): LDB-P-01-200-0.1-0083-LANE HISTO...

## LDB-CAMPUS LOCKDOWN - LOCKED/BLOCKED (TRUE).

Action Group Library

Description:

Contents:

Action Group Properties

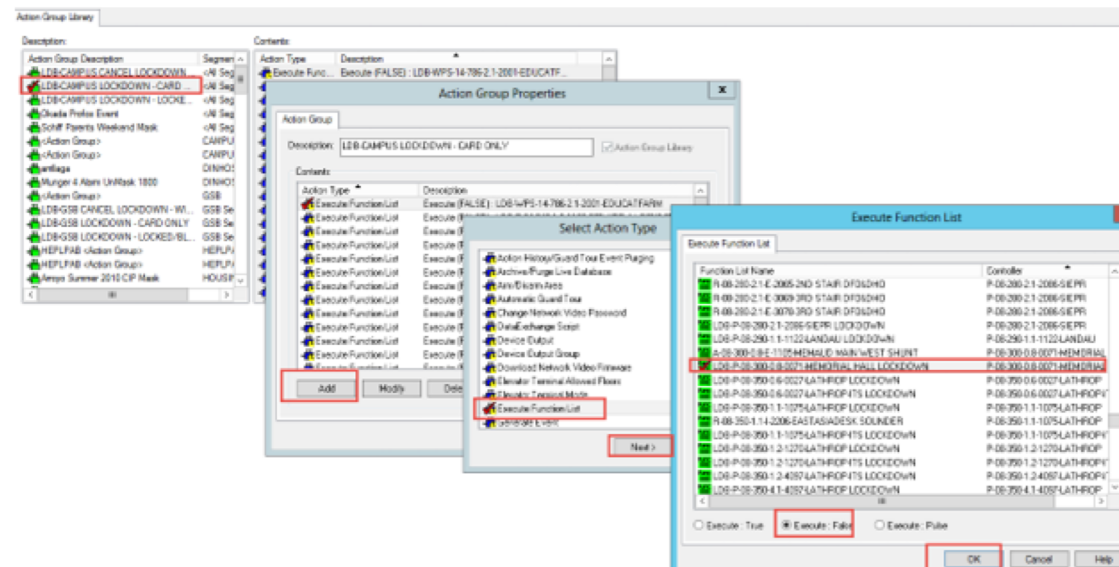
Execute Function List

Execute: TRUE

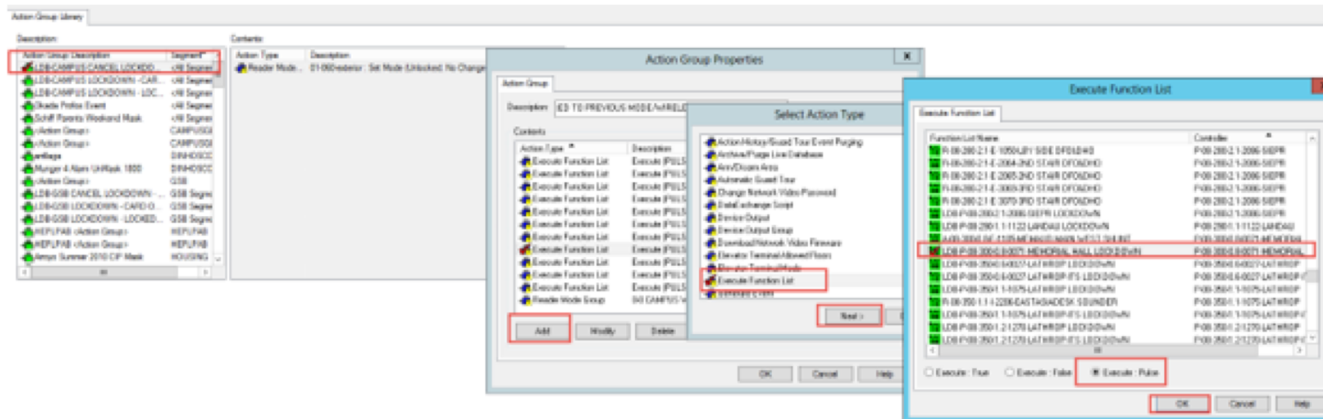


# Lockdown Programming

## LDB-CAMPUS LOCKDOWN - CARD ONLY (FALSE)



## LDB-CAMPUS-CANCEL LOCKDOWN (PULSE)



# Lockdown Programming (cont)

Global Linkage

Name: LDB-CAMPUS LOCKDOWN BUTTON

Global Linkage Input Event Output Action

World time zone: (GMT-08:00) Pacific Time (US & Car)

Event Timestamp Tolerance: Hour(s) 0 Minute(s) 1 Second(s) 0

☒ Daylight savings

Timezones: Always, DORFSI-06-010-8A-9P M-F, DINHOSCON-UNLOCK HOURS-06-400K-WILBUR DINING, HOUSING-TEMP LINEN CREW LEAD-TZ MON-FRI 0745-1700, VPUE-03-420-8A-5P, ATHLETICS-08-110-TAEKWONDO

Logic correlation time period: 10 seconds

Global Linkage

Name: LDB-CAMPUS LOCKDOWN BUTTON

Global Linkage Input Event Output Action

Event	Device	Parameter
Alarm Active	LDB-UU-CPA-U.U-UUUU-LOCKDOWN	
Alarm Active	A-14-200-2.3-2829-CAMPUS LOCKDOWN BUTTON	

Create AND Logic Group Add Modify Delete

Create OR Logic Group

Global Linkage

Name: LDB-CAMPUS LOCKDOWN BUTTON

Global Linkage Input Event Output Action

Action Type	Description
Action Group	LDB-CAMPUS LOCKDOWN - LOCKED/BLOCKED

Add Modify Delete

- P-14-200-2.3-2829-FORSYTHEHALLIN (Firmware Revision:1.32.2)
  - A-14-200-2.3-I-1743-F125OSCDR
  - A-14-200-2.3-I-2829-12V AC FAIL
  - A-14-200-2.3-I-2829-12VBATTFAIL
  - A-14-200-2.3-I-2829-24VACFAIL
  - A-14-200-2.3-I-2829-24VBATTFAIL
  - A-14-200-2.3-I-2829-ACPTAMP
  - A-14-200-2.3-I-2829-CAMPUS CARD ONLY BUTTON
  - A-14-200-2.3-I-2829-CAMPUS LOCKDOWN BUTTON
  - A-14-200-2.3-I-2829-DR RLS 2824
  - A-14-200-2.3-I-2829-POWERTAMP
- P-14-200-2.3-2829-FORSYTHEHALLOT (Firmware Revision:1.32.2)
- Function Lists



# Lockdown Notifications

Alarm Definitions Alarm Configuration Priority Text Audio CCTV Instructions Messages Acknowledgment Actions Failure to Acknowledge ILS

Alarm

- LOCKDOWN: LDB AT CAMPUS ACTIVATED
- LOCKDOWN: LDB AT CAMPUS DEACTIVATED
- LOCKDOWN: LDB AT CPA ACTIVATED
- LOCKDOWN: LDB AT CPA DEACTIVATED
- LOCKDOWN: LDB AT GSB ACTIVATED
- LOCKDOWN: LDB AT GSB DEACTIVATED
- Locked Under AFC
- Locked Under First Card Unlock
- Log Overflow
- Log Threshold
- Logged In Success
- Logged Out Success
- Login Tamper
- Loitering

Name: LOCKDOWN: LDB AT CAMPUS ACTIVATED Priority: 200

☒ Display alarm ☐ Must mark in progress  
☒ Print alarm ☐ Must acknowledge  
☒ Visual notification ☐ Require login on acknowledge  
☒ Display map ☐ Must enter response on acknowledge  
☐ Video verification ☐ Don't delete on acknowledge  
☐ Show cardholder ☐ Operator can change response  
☒ Active alarm Alarm description format:  
☐ Aggregate alarm

Assigned event(s):

Event	Device	Type
Alarm Active	A-14-200-2.3-I-2829-CAMPUS CARD ONLY B...	Input
Alarm Active	A-14-200-2.3-I-2829-CAMPUS LOCKDOWN ...	Input

Link Summary

Alarm Definitions Alarm Configuration Priority Text Audio CCTV Instructions Messages Acknowledgment Actions Failure to Acknowledge ILS Priority On

Alarm

- Lock Tamper Restored
- Lock Type Read
- Lock Updated
- LOCKDOWN: LDB AT CAMPUS ACTIVATED
- LOCKDOWN: LDB AT CAMPUS DEACTIVA...
- LOCKDOWN: LDB AT CPA ACTIVATED
- LOCKDOWN: LDB AT CPA DEACTIVATED
- LOCKDOWN: LDB AT GSB ACTIVATED
- LOCKDOWN: LDB AT GSB DEACTIVATED
- Locked Under AFC
- Locked Under First Card Unlock
- Log Overflow
- Log Threshold
- Logged In Success
- Logged Out Success

Messages

Type To Message

E-M... PROD SMARTS, E-Mail... LOCKDOWN ACTIVATED: F

View E-Mail Message

To: sup - Public Safety, E-Mail <dps-notification@lists.stanford.edu>

Subject: LOCKDOWN ACTIVATED: Forsythe Hall

Message: A lockdown action has been activated using a Forsythe Hall lockdown button. The type of lockdown is identified in the device listed below.

Device: %deviceName  
Start time: %alarmTime

231 characters

OK Cancel



noreply@stanford.edu

Jonathan Randolph

## LOCKDOWN ACTIVATED: Forsythe Hall

We removed extra line breaks from this message.

A lockdown action has been activated using a Forsythe Hall lockdown button. The type of lockdown is identified in the device listed below.

Device: A-14-200-2.3-I-2829-CAMPUS LOCKDOWN BUTTON

Start time: 6:02:06 AM 1/3/2019

Stanford University

HOMESEARCHCONFIGUREHEADERS

Active Root Causes

CSV

Legend

Sev 1
Sev 2
Sev 3
Sev 4

Search:

Sev	Ack	Owner	Class	Name	OA	Event	Event Text	Source	Count	Last Change	First Notify	Clear on Ack	Event Type
1			ACES_--	null	UNK	Campus Lockdown ACTIVATED	A lockdown action has been activated using a Fo Email		10	12/3/18 15:43	1/3/19 06:02	Durable	

Showing 1 to 6 of 6 entries

Alert Detail

Audit Trail

Run Book

```

alertClass          ACES_--
event               Campus Lockdown ACTIVATED
name                null
source              Email
lastChangeEpoch    1546524138
status              active
hostname            null

text
A lockdown action has been activated using a Forsythe Hall lockdown button. The type of lockdown is identified
in the device listed below. Device: A-14-200-2.3-I-2829-CAMPUS LOCKDOWN BUTTON Start time: 6:02:06 AM
1/3/2019 Original Timestamp: Thu, 03 Jan 2019 06:02:06 -0800
Stanford
2
Durable
20190103140206.CDF324F_codegreen6.stanford.edu
false
1/3/19 06:02
1/3/19 06:02
UNK
10

Acknowledged
Owner
LastChange          12/3/18 15:43
maintenance
owner
acknowledge
Source
Impact
FirstNotify
ClearOnAcknowledge
EventType
Category

```



# Lockdown Test Preparation

“To Do's” - weeks leading up to Lockdown Test

Confirm contact information for ITOC, GSB, RDE, CPA

Confirm who will be the person executing the lockdown at each location with each group (ITOC, CPA and GSB)

Confirm each group (ITOC, CPA and GSB) has the updated copy of the Lockdown Button procedures

Confirm email notification programming is current for all 3 buttons (Forsythe Hall, CPA and GSB)

Submit change request notifying campus community of lockdown date and impact

Send mass notification to building managers and key stakeholders with 1st and 2<sup>nd</sup> reminders of campus lockdown test date

Program test TZ's and schedulers

Configure/audit testing monitor zones

Configure access levels for testing and assign to the appropriate badges

Do dry run testing with techs on devices in the field

# Lockdown Test Preparation (cont)

## "To Do's" the week of the Lockdown Test

Send final mass notification reminder to building managers and key stakeholders that lockdown test has been scheduled

Audit the LDB Action Group Libraries (function lists and device groups)

Audit the Campus Wireless Reader Lockdown device group

Audit DH & DL devices groups

Add "Blocked" to ILS Priority One events for all WR's

Call CPA dispatch and confirm with CPA managers that we are still a "GO" for the lockdown test on 1/3

Update (if needed) monitor zones: All Segments, Wireless, Outputs

Remove all test equipment from the All Segments monitoring zone, remove all test equipment from the action group library lockdown programming and remove all test equipment from the device group lockdown programming

DO LAST .... Verify that all LDB functions are available from ALL SEGMENTS & GSB SEGMENT GROUP monitor zones

# Lockdown Timeline

## "To Do's" the day of the Lockdown Test

Document offline readers, scheduler events programmed to fire during LD window, document list of TRMs for ONLY wireless readers and DH and DL outputs that have H1 checked.

Document WR's that are NOT in CARD ONLY.

Document DL's that are activated (unlocked) and DH's that are deactivated (unlocked/DH magnetized).

Contact technician and verify access modes on test doors.

Send email communication #1 to community and advise that the 1st lockdown test will start in 30 minutes.

Contact R&DE CARE team and advise that the 1st will start in 30 minutes.

Contact ITOC monitoring team and advise that the 1st will start in 30 minutes and they need to be in position to press the lockdown button.



# Lockdown Timeline

2019 CAMPUS LOCKDOWN TIMELINE.xlsx2 - Excel

LOCKDOWN TASKS					
A	B	C	D	E	F
LOCKDOWN TASKS	TASK DETAILS	TECH	PLANNED START TIME	ACTUAL START TIME	DURATION
Document offline readers, scheduler events programmed to fire during LD window (6am-8am), document list of TRMs for ONLY wireless readers and DH and DL outputs that have H1 checked.	1) From the Report Configuration tab run the "Reader Timezone Schedules" report for list of WR's and the TZ's assigned to them - See column "K" (filter out other devices). 2) From the Alarm Panel Reports tab run the "Alarm Output Panel" report for a list of Outputs and TZ's assigned to them - See column "R" for TZ's to lookup. 3) From the Report Configuration tab run the "Timezone" report which will give you a list of the TZ's, then filter the "AK" column by "YES" which represents that the H1 box is checked. Use the "Timezone" report to look up the readers on the other 2 reports.	Tracy/Jose	4:00 AM		60 MINUTES
Document WR's that are NOT in CARD ONLY (log into WR Monitor Zone). Document DL's that are activated (unlocked) and DH's that are deactivated (unlocked/DH magnetized to prop open) by logging into specific All Segments > "Door Lock (DL) Outputs Monitor Zone" and taking screenshots.	Login to the Wireless panel monitor zone & Door Lock (DL) Outputs/Door Hold (DH) Outputs monitor zones. For the WR's: Login to All Segments and the Wireless Reader monitor zone then goto Configure --> System Status options --> Pick "List" under the View section and sort by Device column. For the DH's and DL's: Login to All Segments and the All Segments monitor zone then goto Configure --> System Status options --> Pick "List" under the View section and sort by Device column and look for outputs with anything other than "normal".	Jonathan			
Test door states and prep doors in Polya Hall	UNLOCK - R-14-160-1.1-E-2215-2FLEASTENTRY (TRACY) CARD ONLY - WR-14-160-1.1-I-1247-AUDITORIUM (JOSE) CARD ONLY - WRS-14-160-1.1-I-1226-106OFFICE (JOSE) UNLOCK - WRA-14-160-2.2-I-2216-213 OFFICE (JONATHAN)	Jonathan/Tracy/Jose	5:00 AM		30 MINUTES
Robert (408-694-8091) in place at Huang for DH & DL testing (04-080 TSO 2077)	Test DH & DL functionality before lockdown. O-04-080-2.1-I-2077-2FL STAIR DL and O-04-080-2.1-I-2077-2FL STAIR DH. Activate O-04-080-2.1-I-2077-2FL STAIR DL prior to lockdown, Deactivate O-04-080-2.1-I-2077-2FL STAIR DH and prop door open prior to lockdown.	Jonathan			
Send email communication #1 to advise that the 1st Lockdown will be executed in 30 minutes @ 6am		Jonathan	5:30 AM		15 MINUTES
Call CARE team: (650) 353-8435, (650) 353-8433, (650) 862-8219 and advise Lockdown will start in 30 minutes		Jonathan			
Call Lee Redmon that the Lockdown will be executed in 30 minutes (650-533-2691)		Jonathan			
Call ITOC (650-721-4862) and advise Lockdown will start in 30 minutes and they need to be in position to hit RED button	Confirm they are logged into "All Segments" in Alarm Monitoring and will be ready to execute Output lockdowns and the "Restore"	Jonathan			



# Temptation



*It was bound to happen!*



TEMPTATION

Do you really want to spend the rest of your life wondering...



# Detrios – Deployed 2020

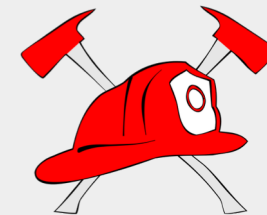
## Locked Reader Override Solution (LROS)



Detrios LROS deployed 2020 - allows specific individuals such as Public Safety and Fire Safety First Responders to override this default functionality and gain access at any reader in any reader status including Locked.

Uses Lenel OnGuard DataConduIT API to allow for specific cardholders (with active badges and valid activate and deactivate dates) to be granted access to readers when any access denied event is received:

- Locked reader status
- Card and Pin reader status
- Invalid access level



Integration looks for access denied events, checks to see whether the cardholder is an authorized individual, and if so integration pulses open the door

# Detrios

**Global override cardholders** – These cardholders are identified in OnGuard by the use of a cardholder dropdown field **Global Reader Override**

The screenshot shows the OnGuard software interface with the Cardholder edit form. The form is divided into several sections. The top section contains fields for Last name (Kirk), First name (James), Middle name (T), Cardholder ID (100010001), and Badge type (Student). The middle section contains fields for Temp last name (Kohn), Temp first name (Tank), Temp middle name (A), Temp e-mail, Temp phone, and Global Reader Override (YES). The bottom section contains an External notes field with the text "How can you say NO to such a cute face?". On the right side of the form, there is a photo of a dog wearing a graduation cap, a "No Last Access" message, and fields for Badge ID (678005), Reg until date (12/31/2025), Activate (11/13/2019), Deactivate (12/31/2025), and Alert. The Person type dropdown is set to Cardholder.



*Only Systems Administrators can edit Global Reader Override field*

- Public Safety/Fire Marshal officers who have this authority are audited by our team bimonthly

Global Reader Override permission resolves issues where:

- we have when new readers are programmed in OnGuard system through third party integrators, and our team is not yet aware of the changes and KNOX access levels haven't yet been updated.
- less experienced building managers inadvertently modify or remove KNOX access levels from the first responders

# Detrios

**Local override cardholders** – These cardholders are identified by having access level assignments that correspond to the override access levels defined in the LROS configuration file

The screenshot displays the Detrios application window with the following components:

- Menu Bar:** Application, Edit, View, Cardholder, Administration, Access Control, Monitoring, Video, Additional Hardware, Logical Access, Window, Help.
- Tab Bar:** Cardholder, User Defined, RDE, Archive, Notes, Badge, Access Levels (selected), Authorized Credential, Device Owner, ILS Authorization, Visits.
- Form Fields:**
  - Last name: Kirk
  - First name: James
  - Middle name: T
  - Cardholder ID: 100010001
  - Badge type: Student
- Access Levels Section:**
  - Show levels for badge ID (issue code): 678005 (0)
  - ☐ Show inactive badges
  - | Access Levels                             | Activate                            | Deactivate               | Intrusion Authority | Assignment Type | Segment  |
|---|-------------------------------------|--------------------------|---------------------|-----------------|----------|
| (LOCKDOWN OVERRIDE)HTSDC-70-C3P0          | <input checked="" type="checkbox"/> | <input type="checkbox"/> |                     | Standard        | ITSDC    |
| (LOCKDOWN OVERRIDE)HTSDC-70-R2D2          | <input checked="" type="checkbox"/> | <input type="checkbox"/> |                     | Standard        | ITSEQUIP |
| (LOCKDOWN OVERRIDE)HTSEQUIP-70-DARTHVADER | <input checked="" type="checkbox"/> | <input type="checkbox"/> |                     | Standard        | ITSEQUIP |
  - ☐ Show unassigned levels
  - 3 levels assigned
- Cardholder Image:** A photo of a dog wearing a graduation cap.
- Access History:** No Last Access
- Metadata Fields:**
  - Badge ID: 678005
  - Reg until date: 12/31/2025
  - Activate: 11/13/2019
  - Deactivate: 12/31/2025
  - Alert: (dropdown menu)

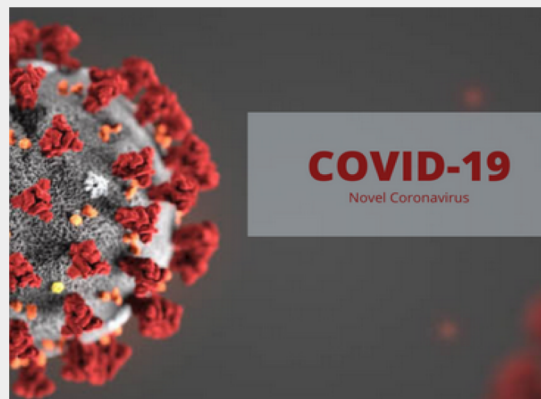
Program lockdown override access levels with a standard prefix “(LOCKDOWN OVERRIDE)” and add the name of the access level to an “Authorized access levels” configuration file on the Detrios server.



# Detrios

## **Disable override access** to specific card readers

Add the names of card readers that should NEVER be accessed using the lockdown override feature to a “reader exclusion” configuration file on the server. These card readers would include doors that provide access to hazardous material or infectious diseases.



# Other use cases for lockdown functionality (Card Only button)...



**DAD, WHAT'S THAT  
DARK PLACE OVER THERE?**



**THAT'S CALIFORNIA, SIMBA.**

## POWER OUTAGES!

- Historic 4 day outage summer 2022
- Don't know when panel backup battery runs out of power
- Don't know what the door state is from Alarm Monitoring - sea of Red X's
- Don't know when power will come on and go off again



**WHAT THIS POWER OUTAGE**



**IS STARTING TO FEEL LIKE....**

**Card Only "Yellow Button" to secure buildings into card-only status once power to that building comes back online.**

- Card Only override prevents TRMs and scheduler actions from unlocking doors; card accessible
- May need to be pressed multiple times over multiple days

# The Covid Years “Lockdown” Method: March 2019 through Labor Day 2021

During the Covid years we utilized Lenel HOLIDAY tags to “lock down” (secure) campus



Created a “rolling” COVID HOLIDAY tag that applied to ALL segments.

- Prevented TRMs from firing and unlocking doors; does not prevent scheduler actions firing
  - Prevented cardholders from accessing secured buildings (H1 must be unchecked in timezone)
  - Highly segmented, different buildings opened up at different times, remove the COVID holiday for a segment by building manager request
  - All Covid holiday tags removed Labor day 2021
- 
- Bug: Holiday duration somewhere greater than 99 days and less than 150 days caused unexpected behavior - we saw readers unlock unexpectedly as though the holiday wasn't observed



## 8.2 Badge Override feature

**Per the Release notes for 8.2, a new 'Badge Override' is built into Lenel OnGuard:**

“To allow badge access through reader with a Reader Mode set to Locked (such as for a first responder badge), an override attribute has been added to the Badge Form in OnGuard System Administration. The Enable override locked reader mode check box enables access through a reader in locked reader mode for a badge with an active Access Level for that reader”

Something we look forward to testing and comparing against our Detrios LROS integration



# Q&A



# Thanks!



**Jose Rocha**

Senior Applications Engineer

[jrocha@stanford.edu](mailto:jrocha@stanford.edu)

650-796-2620

**Tracy Neil**

Senior Application Support Administrator

[tneil@stanford.edu](mailto:tneil@stanford.edu)

925-998-7022